

 **NEMO**

AREA



AREA



AREA

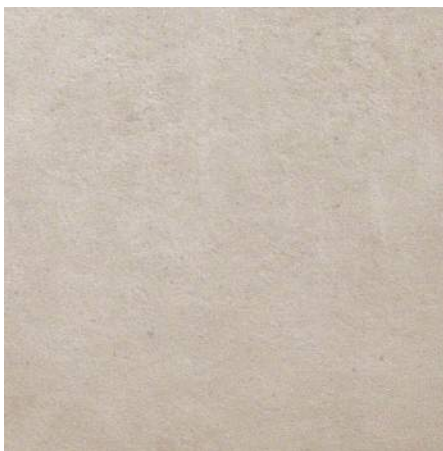


AREA

COLORS



OFF WHITE



PEARL



GRAY



GREIGE



SMOKE



BROWN
LEATHER

* Available in HONED and MATTE finishes



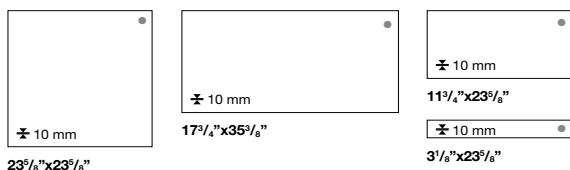
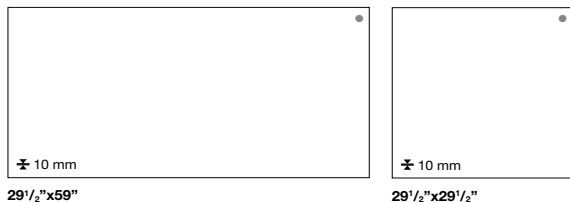
V2
Clearly distinguishable differences in texture
and/or pattern within similar colors.

AREA SIZES



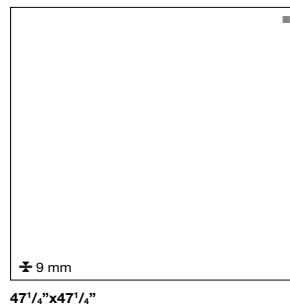
Coloured body porcelain tiles - Rectified monocaliber

MATT AND HONED SURFACE



● Available in all colours

MATT SURFACE



■ Available in
Off White, Gray, Greige, Smoke



MEDIUM TRAFFIC

Moderate commercial and residential.

COLOUR-SHADING

V2
Moderate



Off White, Pearl
Gray, Greige
Brown Leather
Smoke



V1
Light



V2
Moderate

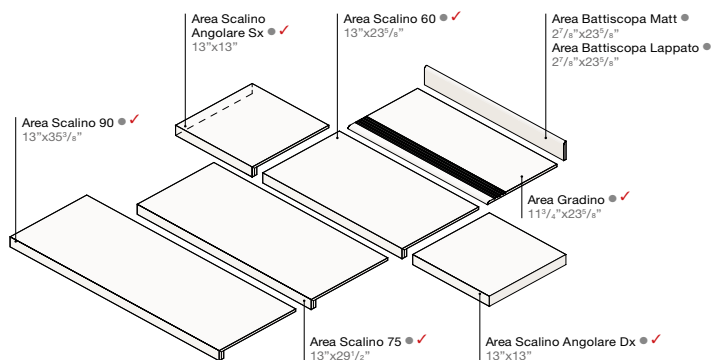


V3
High



V4
Random

TRIM TILES



Area Battiscopa Sagomato Sx/Dx ● ✓
2 7/8" x 1 1/4"

● Available in all colours
✓ These parts are supplied to order

GREEN PROJECT LEED



VOC CONTENT. Low-emitting materials with zero emission of volatile organic compounds (VOC). It can contribute to the awarding of 1 LEED credit.





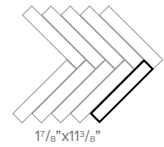
AREA Off White Herringbone
14 1/8" x 16 1/8"



AREA Pearl Herringbone
14 1/8" x 16 1/8"



AREA Greige Herringbone
14 1/8" x 16 1/8"



AREA Gray Herringbone
14 1/8" x 16 1/8"



AREA Brown Leather Herringbone
14 1/8" x 16 1/8"



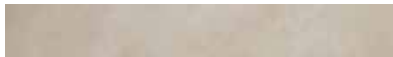
AREA Smoke Herringbone
14 1/8" x 16 1/8"



AREA Off White Listello
3 1/8" x 23 3/8"



AREA Pearl Listello
3 1/8" x 23 3/8"



AREA Greige Listello
3 1/8" x 23 3/8"



AREA Gray Listello
3 1/8" x 23 3/8"



AREA Brown Leather Listello
3 1/8" x 23 3/8"



AREA Smoke Listello
3 1/8" x 23 3/8"



AREA



Coloured body porcelain tiles - Rectified monocaliber

Compliant with standards EN 14411:2012 annex G group Bla
Compliant with standards ISO 13006:2012 annex G group Bla

29 1/2" x 59" ± 10 mm 47 1/4" x 47 1/4" ± 9 mm
29 1/2" x 29 1/2" ± 10 mm 23 3/8" x 23 3/8" ± 10 mm
17 3/4" x 35 3/8" ± 10 mm 11 3/4" x 23 3/8" ± 10 mm

Technical features	Test Method	Requirements for nominal size N			AREA Floor	
		7 cm ≤ N < 15 cm	N ≥ 15 cm		Matt	Honed
		(mm)	(%)	(mm)		
Length and width	ISO 10545-2	± 0,9 ⁽¹⁾	± 0,6 ⁽¹⁾	± 2,0 ⁽¹⁾	± 0,3% ± 1,0 mm	± 0,3% ± 1,0 mm
Thickness		± 0,5 ^(2*)	± 5 ^(2*)	± 0,5 ^(2*)	± 10,0% ± 0,5 mm	± 10,0% ± 0,5 mm
Straightness of sides		± 0,75 ^(3**)	± 0,5 ^(3**)	± 1,5 ^(3**)	± 0,3% ± 0,8 mm	± 0,3% ± 0,8 mm
Rectangularity (Measurement only on short edges when L/1 ≥ 3)		± 0,75 ^(3***)	± 0,5 ^(3***)	± 2,0 ^(3***)	± 0,3% ± 1,5 mm	± 0,3% ± 1,5 mm
Surface flatness	ISO 10545-2	c.c. ± 0,75	c.c. ± 0,5	c.c. ± 2,0	± 0,4% ± 1,8 mm	± 0,3% ± 1,5 mm
		e.c. ± 0,75	e.c. ± 0,5	e.c. ± 2,0		
		w. ± 0,75	w. ± 0,5	w. ± 2,0		
		EN 14411 annex G (Group Bla)		ISO 13006 annex G (Group Bla)		
Water absorption	ISO 10545-3	E _a ≤ 0,5% Individual Maximum 0,6%			≤ 0,1 %	≤ 0,1 %
	ASTM C373	Requirement ANSI A 137.1 Water absorption max ≤ 0,5%			≤ 0,5 %	≤ 0,5 %
Breaking strength	ISO 10545-4	S ≥ 1300 N			S ≥ 1500 N	S ≥ 1500 N
Modulus of rupture		R ≥ 35 N/mm ²			R ≥ 40 N/mm ²	R ≥ 40 N/mm ²
Impact resistance, as coefficient of restitution	ISO 10545-5	Declared value	Test method available		≥ 0,55	≥ 0,55
Mohs hardness Durezza Mohs	EN 101 ⁽⁴⁾	≥ 6 (UGL)			Suitable for	5
Resistance to deep abrasion of unglazed tiles (removed volume)	ISO 10545-6	≤ 175 mm ³			≤ 150 mm ³	≤ 150 mm ³
Coefficient of thermal linear expansion	ISO 10545-8	Declared value	Test method available		≤ 7 MK ⁻¹	≤ 7 MK ⁻¹
Thermal shock resistance	ISO 10545-9	Pass according to ISO 10545-1	Test method available		Resistant	Resistant
Moisture expansion (in mm/m)	ISO 10545-10	Declared value	Test method available		≤ 0,01% (0,1mm/m)	≤ 0,01% (0,1mm/m)
Frost resistance	ISO 10545-12	Pass according to ISO 10545-1	Required		Resistant	Resistant
Bond strength/adhesion for improved cementitious adhesives	EN 1348	Declared value	-		≥ 1,0 N/mm ² (Class C2 - EN 12004)	≥ 1,0 N/mm ² (Class C2 - EN 12004)
Reaction to fire	-	Class A1 or A1 _s	-		A1 - A1 _s	A1 - A1 _s
Resistance to household chemicals and swimming pool salts	ISO 10545-13	Minimum Class B (U for unglazed tiles)			UA	UA
Resistance to low concentrations of acids and alkalis		Declared Class	Manufacturer is to state classification		ULA	ULA
Resistance to high concentrations of acids and alkalis		Declared Class	Test method available		UHA	-
Resistance to staining	ISO 10545-14	Declared Class	Test method available		5	5
Barefoot Ramp Test	DIN 51097 (CEN/TS16165, Annex A)	Declared value	-		A	0
Shod Ramp Test	DIN 51130 (CEN/TS 16165, Annex B)	Declared value	-		R9	N.C.
Pendulum Friction Test	UNE-EN 12633 (CEN/TS 16165, Annex C)	Declared value	-		Class 1	Class 0
	BS 7976-2002 (CEN/TS 16165, Annex C)	Declared value	-		PTV > 36 Dry PTV < 24 Wet	PTV > 36 Dry PTV < 24 Wet
Dynamic coefficient of friction (DCOF)	ANSI A137.1-2012	ANSI A.137.1 Requires a minimum value of 0.42 for commercial areas that are likely to be wet.			> 0,42 Wet	< 0,42 Wet
Static coefficient of friction (SCOF)	ASTM C1028-2007	The Ceramic Tiles Institute identifies Tile Slip Resistant when SCOF ≥ 0,60			≥ 0,60 Dry ≥ 0,60 Wet	≥ 0,60 Dry 0,50-0,60 Wet
Pendulum Friction Test	AS/NZS 4586-2013, Appendix A (Four S.rubber)	Declared Classification of the pedestrian surface materials according to the Wet Pendulum Test			Class P1	Class P0

⁽¹⁾ The permissible deviation, in % or mm, of the average size for each tile (2 or 4 sides) from work size (W).
^(2*) The permissible deviation, in % or mm, of the average thickness for each tile from the work size thickness (W).
^(3**) The maximum permissible deviation from straightness, in % or mm, related to the corresponding work sizes (W).
^(3***) The maximum permissible deviation from rectangularity, in % or mm, related to the corresponding work sizes (W).
c.c. The maximum permissible deviation from centre curvature, in % or mm, related to diagonal calculated from the work sizes (W).
e.c. The maximum permissible deviation from edge curvature, in % or mm, related to the corresponding work sizes (W).
w. The maximum permissible deviation from warpage, in % or mm, related to diagonal calculated from the work sizes (W).
(1). Requirements european standard EN 176.
(2). Determination of slip resistance of pedestrian surfaces; it does not cover sports surfaces and road surfaces for vehicles (skid resistance).

MADE IN ITALY



NEMO

NEMOTILE.COM

AREA