

 **NEMO**

**BASALTINA STONE PROJECT**

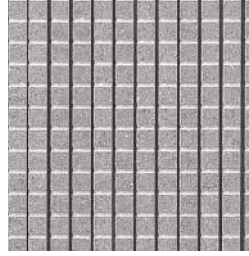


# BASALTINA STONE PROJECT PORCELAIN TILE

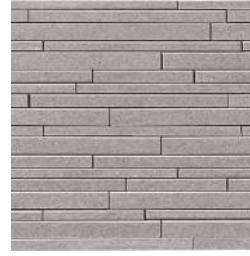
## COLORS



SABBIATA



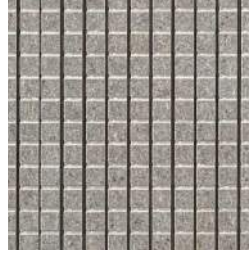
SABBIATA MOSAIC



SABBIATA MURETTO



SABBIATA VELVET



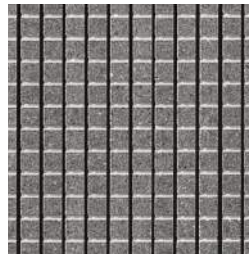
SABBIATA VELVET  
MOSAIC



SABBIATA VELVET  
MURETTO



NATURALE



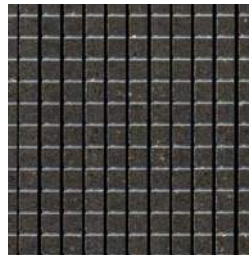
NATURALE  
MOSAIC



NATURALE  
MURETTO



STUCCATA



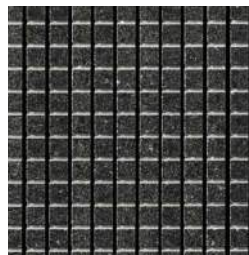
STUCCATA  
MOSAIC



STUCCATA  
MURETTO



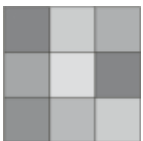
LAPPATA



LAPPATA  
MOSAIC



LAPPATA  
MURETTO



**V3**

Moderate Variation

# BASALTINA STONE PROJECT

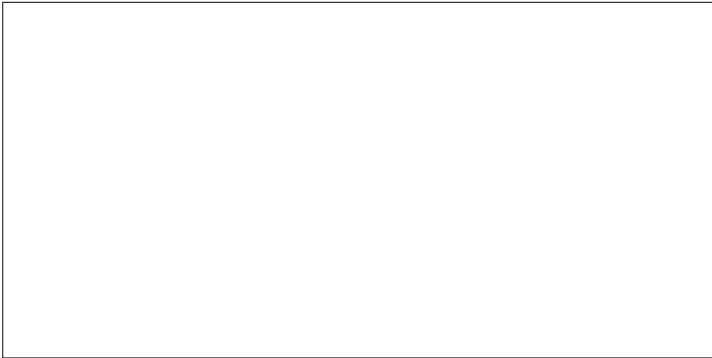
## SIZES



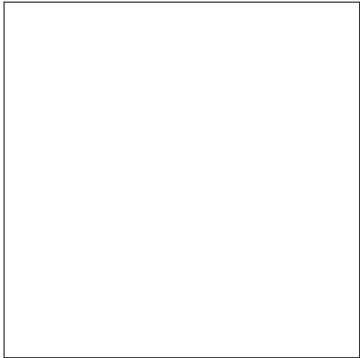
TEXTURE



SCALPELLATA



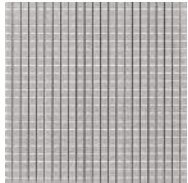
24x48



24x24



12x24



12x12 mosaic sheet



12x24 muretto sheet



# TECHNICAL FEATURES

FULL BODY PORCELAIN

THICKNESS 11 mm / 12 mm

Features	Test Method	Plain Tile
Water Absorption	ISO 10545-3	≤ 0.04 %
Frost Resistance	ISO 10545-12	Resistant
Bending Strength	ISO 10545-4	≥ 50 N/mm <sup>2</sup>
Breaking Strength	ISO 10545-4	≥ 3000 N
Resistance to Deep Abrasion	ISO 10545-6	≤ 145 <sup>6</sup> mm <sup>3</sup>
Thermal Expansion	ISO 10545-8	$\alpha \leq 7 \times 10^{-6} \text{ } ^\circ\text{C}$
Thermal Shock Resistance	ISO 10545-9	Resistant
Chemical Resistance	ISO 10545-13	uha & ula Resistant
Stain Resistance	ISO 10545-14	5 Resistant
Slip Resistance	DIN 51130	R10 (naturale texture / stuccata / sabbbiata velvet) R11 (sabbbiata / scalpellata)
Slip Resistance	DIN 51097	A+B+C (sabbbiata / scalpellata)
Dynamic Friction Coefficient	B.C.R. tortus	$\mu > 0.40$ (sabbbiata/sabbbiata velvet / scalpellata / naturale / scalpellata / texture naturale)
Coefficient of Friction	ASTM C 1028	wet / dry COF ≥ 0.60 (sabbbiata / sabbbiata velvet / scalpellata / naturale / stuccata / texture naturale)
Dynamic Coefficient of Friction (DCOF)	ANSI A 137.1 : 2012 (BOT 3000)	DCOF ≥ 0.42 (naturale / stuccata / sabbbiata velvet) DCOF ≥ 0.62 (sabbbiata / scalpellata)
Wet Pendulum Test AUS	AS 4586 : 2013	Class W (sabbbiata / scalpellata)
Pendulum Test UK	BS 7976 : 2002	slider 96 wet: 36+ (sabbbiata / scalpellata) slider 55 wet: 36+ (sabbbiata / scalpellata)



## BASALTINA STONE PROJECT