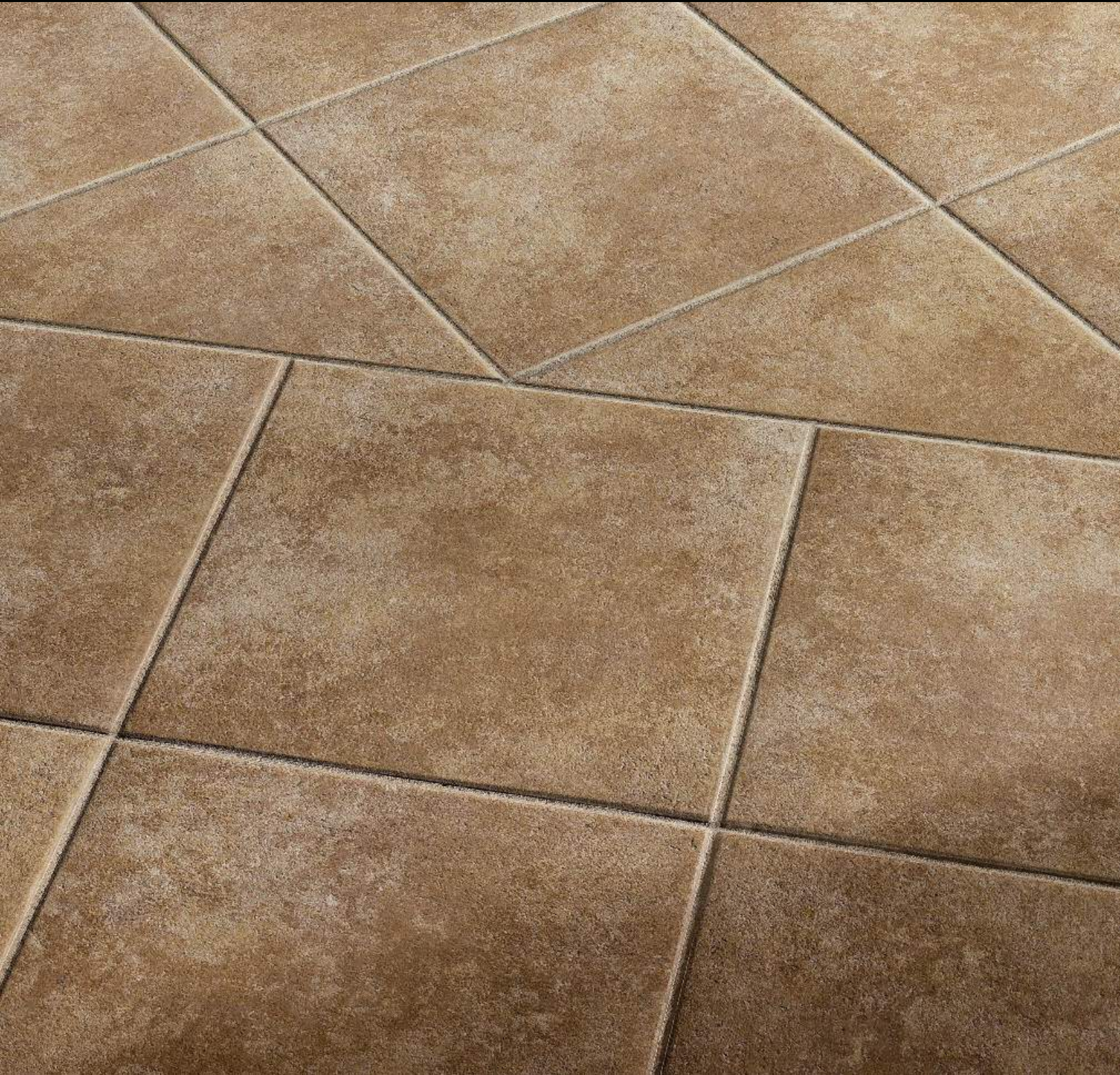


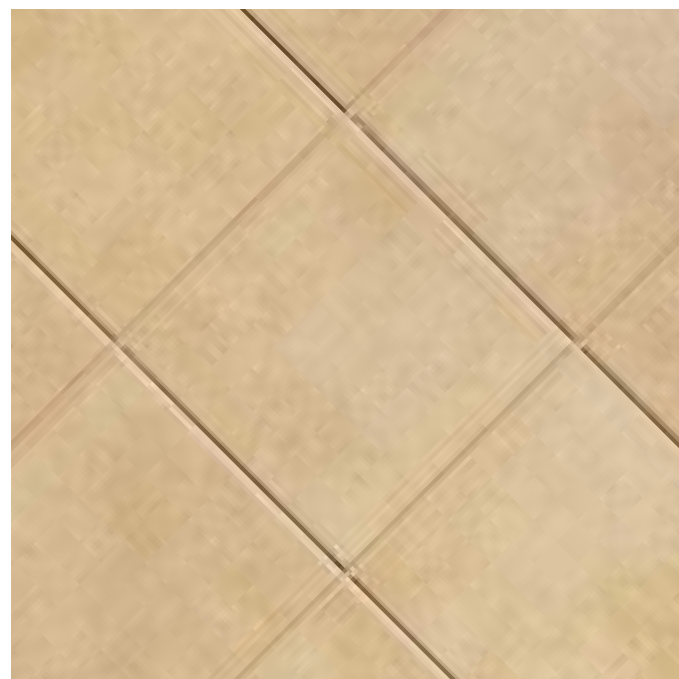
 **NEMO**

ECOCYCLE AMERICANA

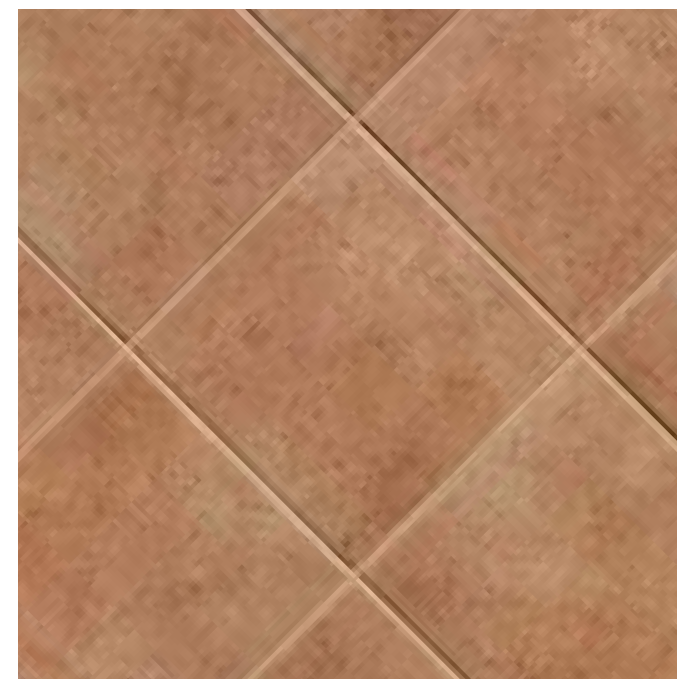




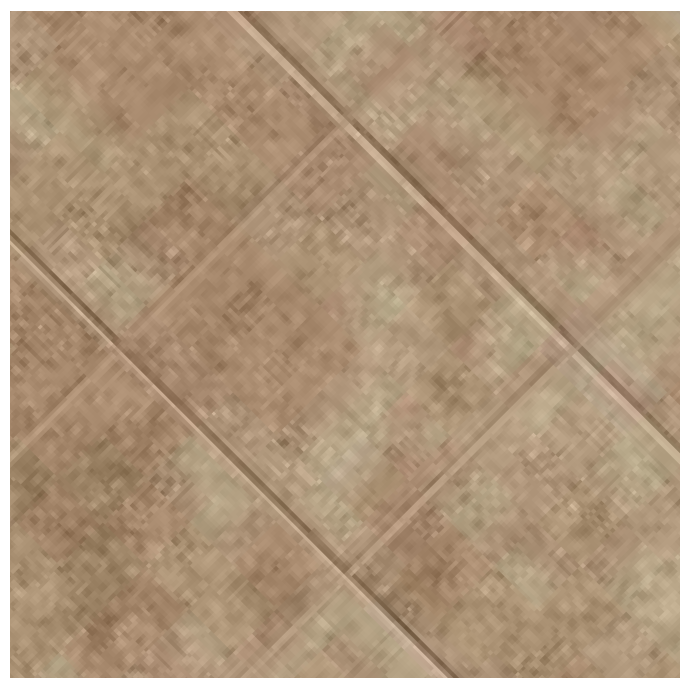
AV111 Monticello 5% pre-consumer recycled content*



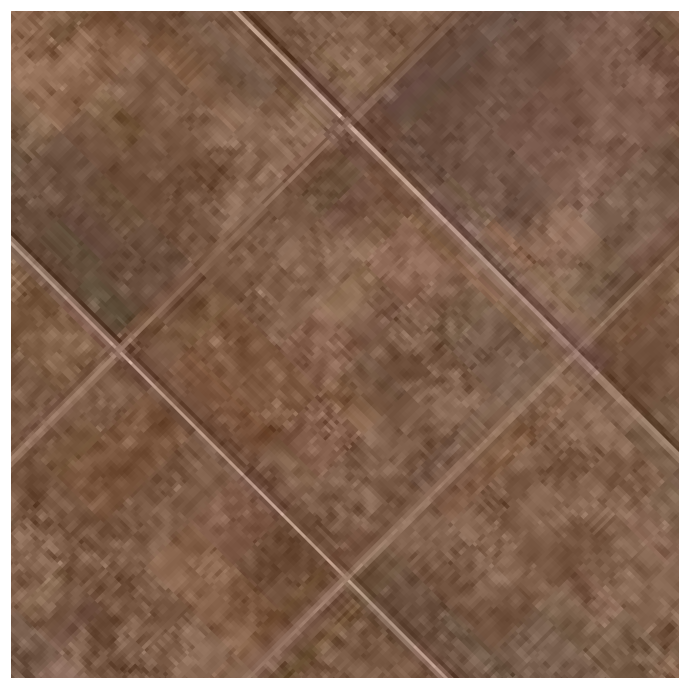
AV112 Gold Rush 20% pre-consumer recycled content*



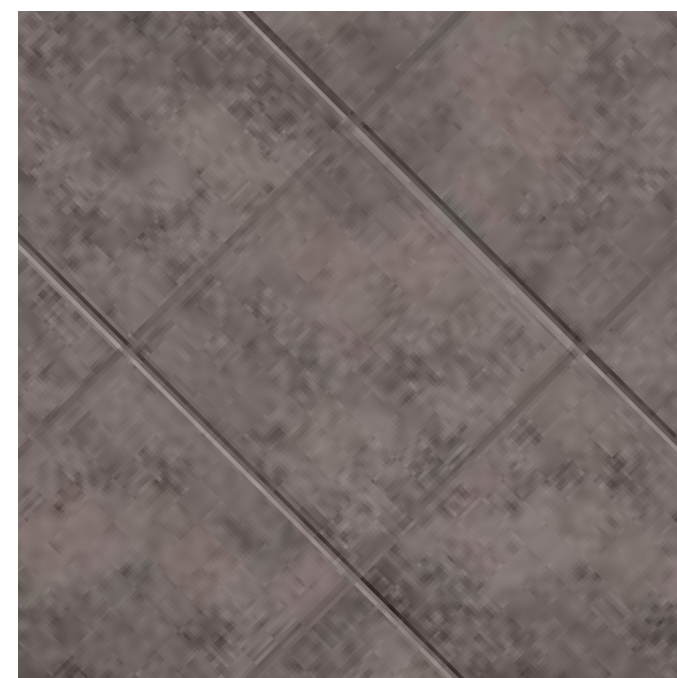
AV113 Alamo 20% pre-consumer recycled content*



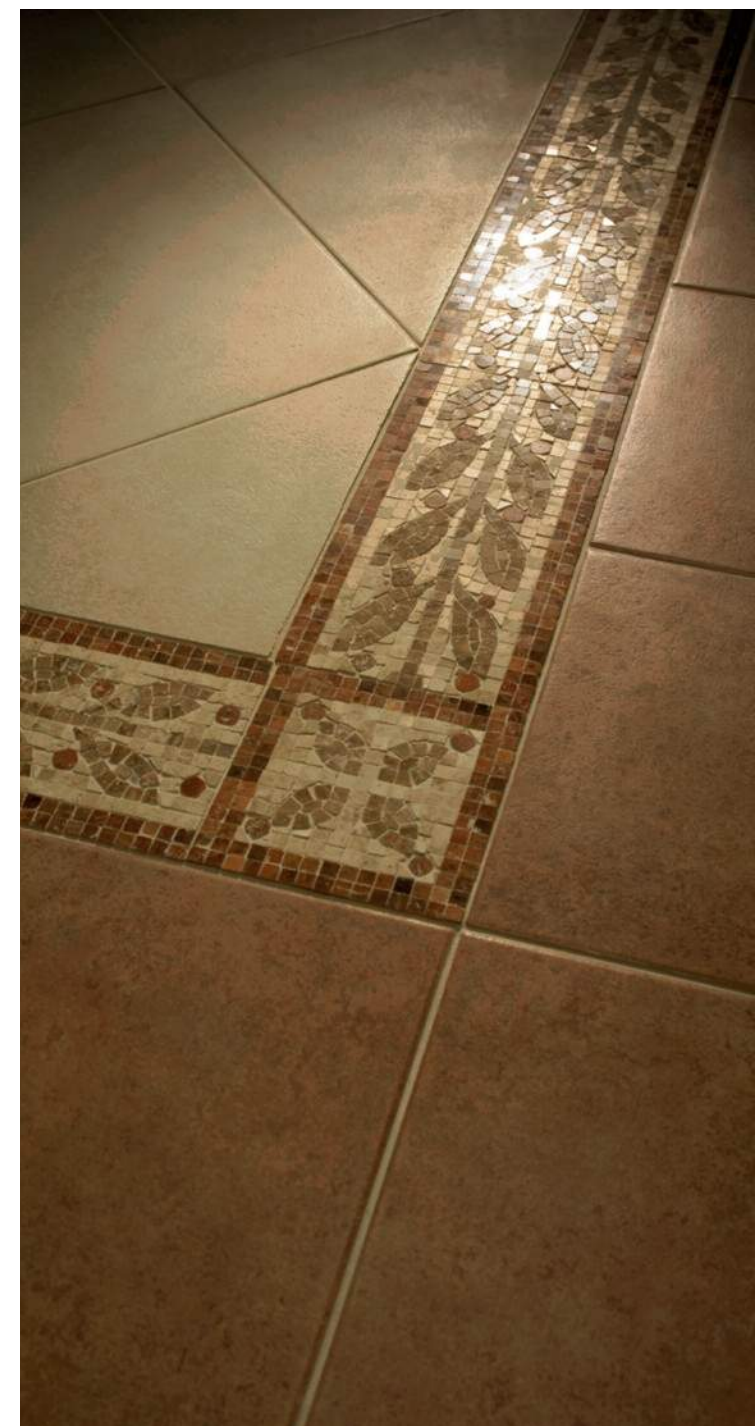
AV114 Grand Canyon 20% pre-consumer recycled content*



AV115 Rushmore 20% pre-consumer recycled content*

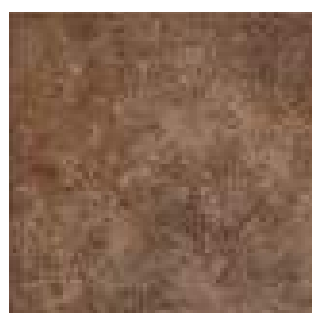


AV116 Plymouth Rock 20% pre-consumer recycled content*

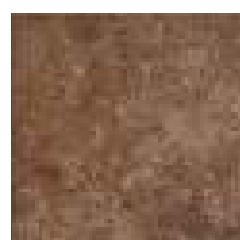


Products featured in photo above: AV113 Alamo 12" x 12", AV111 Monticello 18" x 18",
Modern Mythology S005 Electra Olive Rosette 6" x 6",
S005 Electra Olive Border 6" x 12"
Products featured on front cover: AV114 Grand Canyon 12" x 12"

Sizes (Available in all colors. Shown in AV115 Rushmore)



18" x 18"



12" x 12"



*Note: This product contains pre-consumer recycled content. Percentage varies by color.



ECOCYCLE Americana

Sizes and Finishes

Field Tile (Available in all colors)

Nominal (in)	Actual (in)	Thickness (in)	Finish
12 x 12	11-3/4 x 11-3/4	5/16	UPS
18 x 18	17-3/4 x 17-3/4	3/8	UPS

Coordinating Trim (Available in all colors)

Nominal (in)	Actual (in)	Thickness (in)	Finish
4 x 12 Single Bullnose	3-3/4 x 11-3/4	5/16	UPS
6 x 12 Cove Base	5-7/8 x 11-3/4	5/16	UPS



4" x 12" Single Bullnose



6" x 12" Cove Base

Product Performance

Breaking Strength	>350 lbf	ASTM C648
Bond Strength	>200 psi	ASTM C482
Chemical Resistance	Unaffected	ASTM C650
Frost Resistance	Resistant	ASTM C1026
Water Absorption	<0.10%	ASTM C1026
Scratch Hardness	7	Mohs Scale

Coefficient of Friction

UPS	Dry	>0.7	ASTM C1028
	Wet	>0.6	ASTM C1028

Recommended Use

ECOCYCLE Americana is recommended for interior floors, countertops, walls, and exterior walls. ECOCYCLE Americana is not recommended for exterior horizontal surfaces or exterior paving. If offset pattern is required for tiles 18 inches or longer, Crossville® recommends an offset of not greater than 33%.

Care and Maintenance

Regular cleaning is the best way to keep ECOCYCLE Americana tile looking good for years to come. Use clean, hot water (combined with a household cleaner for more aggressive cleaning). Rinse thoroughly and dry with a soft cloth. No waxes or sealers are needed.

Shade & Texture Index

ECOCYCLE Americana has a shade variation of V3.



V1



V2



V3



V4

V1=Uniform Appearance
V2=Slight Variation
V3=Moderate Variation
V4=Substantial Variation

This porcelain tile product is produced with a V3 variation. Expect that the amount of color and texture on each piece may vary significantly. Inspect the product upon delivery and for best results, blend tile from several cartons during installation.

Certified Recycling Process

ECOCYCLE Americana contains between 5 and 20 percent pre-consumer recycled content and is manufactured by Crossville® using processes that have been certified by Scientific Certification Systems. SCS has verified that through these recycling processes Crossville® recycles nearly 12 million pounds of previously discarded filtrate and fired tile waste. In addition to its own fired waste recycling, Crossville also accepts and recycles reclaimed, previously installed tile through its Tile Take-Back™ Program.



SCIENTIFIC CERTIFICATION SYSTEMS
SCS-HP-02488
SCS-HP-02483

Product featured in photo above: Rushmore AV115 18"x 18"



LOCATIONS

MANHATTAN SHOWROOM

48 East 21st Street
New York, NY 10010
p. 212.505.0009
f. 212.777.9053

MANHATTAN CONTRACTOR SHOWROOM

49 East 20th Street
New York, NY 10003
p. 212.505.0009
f. 212.477.1455

QUEENS SHOWROOM

177-02 Jamaica Avenue
Jamaica, NY 11432
p. 718.291.5969
f. 718.291.5992

LONG ISLAND SHOWROOM

277 Old Country Rd.
Hicksville, NY 11802
p. 516.935.5300
f. 516.935.5322

PHILADELPHIA SHOWROOM

1520 Locust Street
Philadelphia, PA 19102
p. 215.558.3698
f. 215.545.2796

NEW JERSEY SHOWROOM

21 White Street
Red Bank, NJ 07701
p. 732.677.1044
f. 732.352.6961



NEMO
NEMOTILE.COM