

**■ NEMO**

**MAIN STREET**



# Color Palette

## Colors



**AV211** ▶ Cinema Champagne



**AV212** ▶ Café Caramel



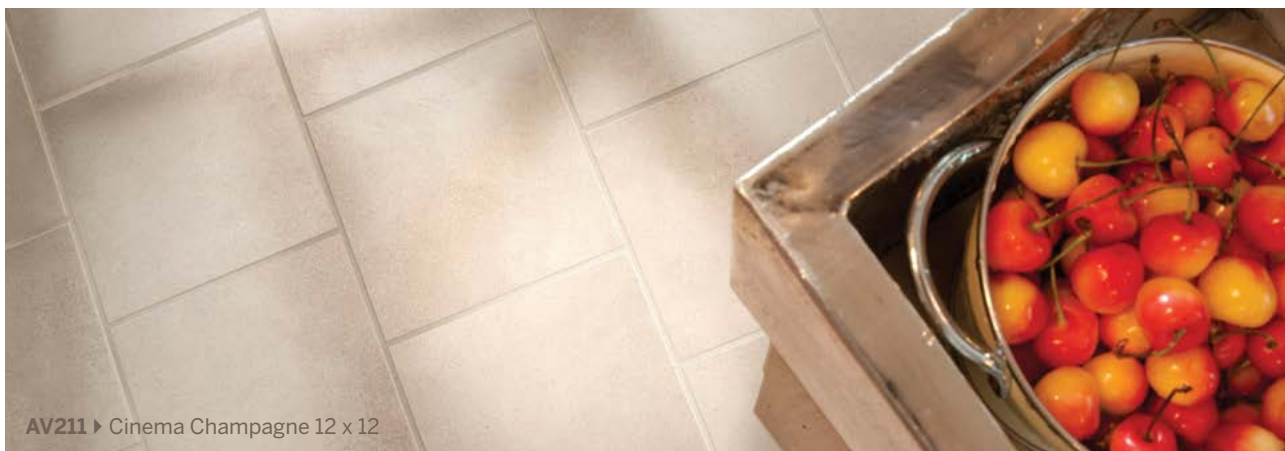
**AV213** ▶ Bistro Brown



**AV214** ▶ Gallery Grey



**AV215** ▶ Boutique Black



**AV211** ▶ Cinema Champagne 12 x 12

# Specifications

## Sizes Available in all colors



## Get Planked!

Our Porcelain Stone® products are available in popular plank shapes with no minimum order and quick fulfillment.

See website for more details and sizes.



## Sizes & Finishes

### Field Tile

Nominal (in)	Actual (in)	Thickness (in)	Finish
6 x 6	5-13/16 x 5-13/16	3/8	UPS
6 x 18	5-13/16 x 17-13/16	3/8	UPS
12 x 12	11-13/16 x 11-13/16	3/8	UPS
18 x 18	17-13/16 x 17-13/16	3/8	UPS

Crossville recommends a grout joint of 3/16" to 1/4"

Actual measurements stated in inches indicate tile is calibrated (non-rectified).

Actual measurements stated in mm indicated tile is rectified.

### Mosaics

Available in all colors

Nominal (in)	Actual (in)	Thickness (in)	Finish
2 x 2 Mosaics*	1-13/16 x 1-13/16	3/8	UPS

Mesh mounted on a 11-13/16 x 11-13/16 in sheet.

### Coordinating Trim

Nominal (in)	Actual (in)	Thickness (in)	Finish
4 x 12 Single Bullnose	3-3/4 x 11-3/4	3/8	UPS
6 x 12 Cove Base	5-7/8 x 11-3/4	3/8	UPS



4 x 12 Bullnose



6 x 12 Cove Base

## Product Performance

Breaking Strength	>500 lbf	ASTM C648
Bond Strength	>200 psi	ASTM C482
Chemical Resistance	Unaffected	ASTM C650
Frost Resistance	Resistant	ASTM C1026
Water Absorption	<0.10%	ASTM C373
Scratch Hardness	7	Mohs Scale

## Wet Dynamic Coefficient of Friction

UPS	0.66 - 0.76	AcuTest <sup>SM</sup>
-----	-------------	-----------------------

## Shade & Texture Index

Main Street has a shade variation of V3.

V1



V2



V3



V4



V1 Uniform appearance

V2 Slight Variation

**V3 Moderate Variation**

V4 Substantial Variation

This porcelain tile product is produced with a V3 variation. Expect that the amount of color and texture on each piece may vary significantly. Inspect the product upon delivery and for best results, blend tile from several cartons during installation.

### Recommended Use

Main Street is recommended for interior floors, walls, countertops, and exterior walls in both residential and commercial applications. Main Street is not recommended for exterior horizontal surfaces or exterior paving. If offset pattern is required for tiles 18 inches or longer, Crossville® recommends an offset of not greater than 33%.

### Environmentally Conscious

Main Street contains a minimum of 4% pre-consumer recycled content and is manufactured by Crossville® using processes that have been certified by Scientific Certification Systems. SCS has verified that through these recycling processes Crossville recycles nearly 12 million pounds of previously discarded filtrate and fired tile waste. In addition to its own fired waste recycling, Crossville also accepts and recycles reclaimed, previously installed tile through its Tile Take-Back™ program.

### Wet Area Use Mainstreet Mosaics

Crossville® produces the Main Street mosaics with the Cross-Sheen® (UPS) finish. The AcuTest™ Wet Dynamic COF of the Main Street UPS finish is  $\geq .60$ . Their small sizes ensure frequent grout joints which provides traction and drainage. Crossville cannot control situations involving incorrect installation, improper slope to the drain for elimination of standing water and poor surface cleaning. This information is provided so that customers may make a realistic and informed decision when comparing Main Street to other tile products in wet area environments, such as residential/commercial bathrooms, showers, and interior pool decks.

### Care and Maintenance

Regular cleaning is the best way to keep Main Street tile looking good for years to come. Use clean, hot water (combined with a household cleaner for more aggressive cleaning). Rinse thoroughly and dry with a soft cloth. No waxes are needed.



AV215 ▶ Boutique Black 6 x 18

### Trade Organizations



### Environmentally Aware



---

# Main Street

---

## Porcelain Stone®

A city-inspired product that combines function and durability with the beauty of Crossville Porcelain Stone. Main Street is a contemporary line from Crossville that promises to be a commercial favorite.

- Contemporary color palette
- Neutral colors enhanced by subtle stone look
- Extremely durable for long-lasting beauty
- High DCOF and low maintenance ideal for commercial settings
- Crossville recommends a grout joint of 3/16 to 1/4 inch



AV212 ▶ Café Caramel 18 x 18

---

# Main Street



**AV213** ▶ Bistro Brown 6 x 6, 12 x 12, and 6 x 18

Cover: **AV214** ▶ Gallery Grey 6 x 18

**AV215** ▶ Boutique Black 2 x 2 Mosaics

 **CROSSVILLE**®

# LOCATIONS

## MANHATTAN SHOWROOM

48 East 21st Street  
New York, NY 10010  
p. 212.505.0009  
f. 212.777.9053

## MANHATTAN CONTRACTOR SHOWROOM

49 East 20th Street  
New York, NY 10003  
p. 212.505.0009  
f. 212.477.1455

## QUEENS SHOWROOM

177-02 Jamaica Avenue  
Jamaica, NY 11432  
p. 718.291.5969  
f. 718.291.5992

## LONG ISLAND SHOWROOM

277 Old Country Rd.  
Hicksville, NY 11802  
p. 516.935.5300  
f. 516.935.5322

## PHILADELPHIA SHOWROOM

1520 Locust Street  
Philadelphia, PA 19102  
p. 215.558.3698  
f. 215.545.2796

## NEW JERSEY SHOWROOM

21 White Street  
Red Bank, NJ 07701  
p. 732.677.1044  
f. 732.352.6961



**NEMO**  
NEMOTILE.COM



**MAIN STREET**