

 **NEMO**

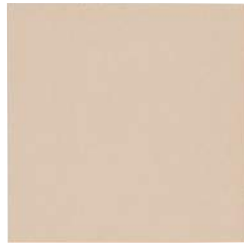
**RETROACTIVE**



# Color Palette



**A215** ▶ Empress White  
UPS/PO



**C370** ▶ Featherstone  
UPS/PO



**C360** ▶ Maple Sugar  
UPS/PO



**B210** ▶ Seabeeze  
UPS/PO



**A870** ▶ Seal Taupe  
UPS/PO



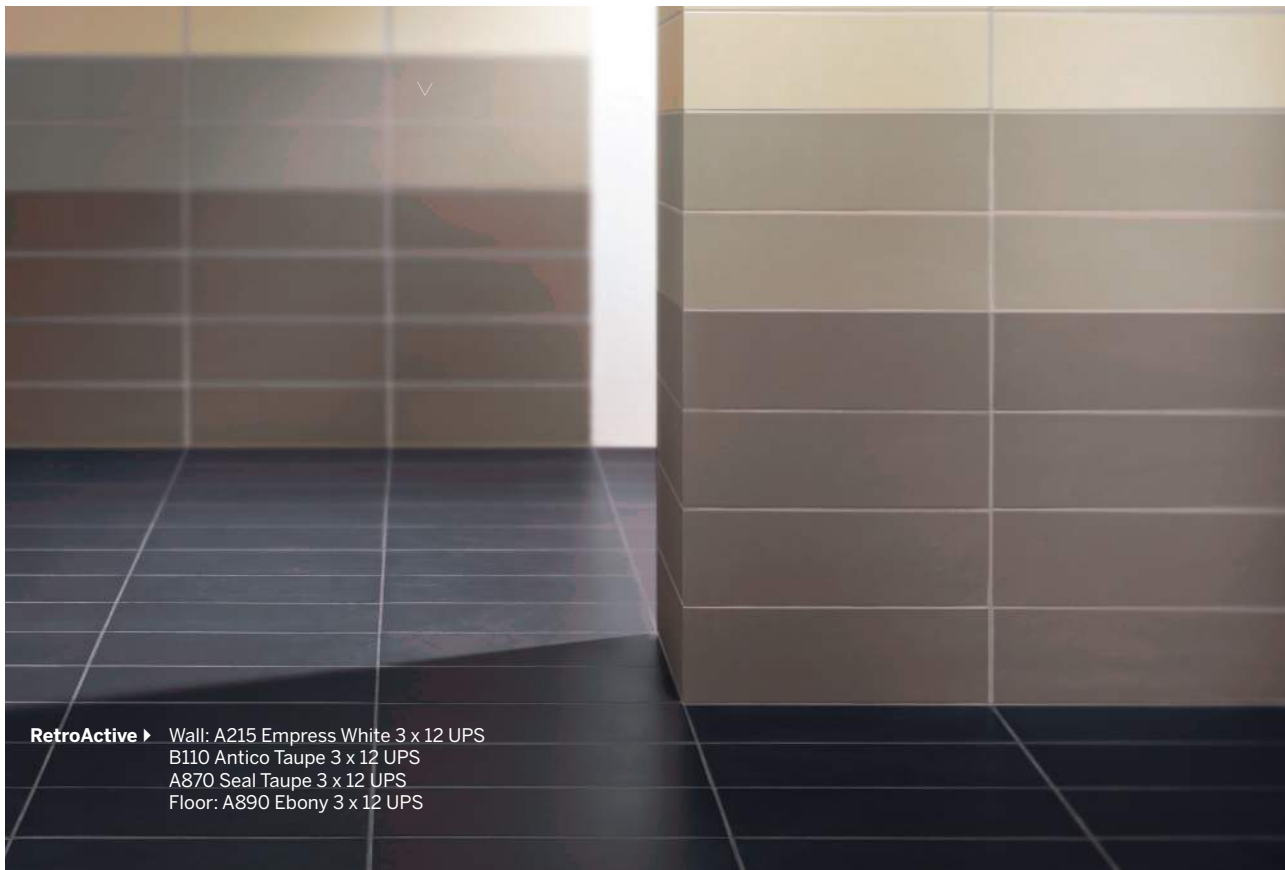
**B110** ▶ Antico Taupe  
UPS/PO



**A890** ▶ Ebony  
UPS/PO



**RPW1** ▶ Pure White  
UPS only



**RetroActive** ▶ Wall: A215 Empress White 3 x 12 UPS  
B110 Antico Taupe 3 x 12 UPS  
A870 Seal Taupe 3 x 12 UPS  
Floor: A890 Ebony 3 x 12 UPS

# Specifications

## Colors



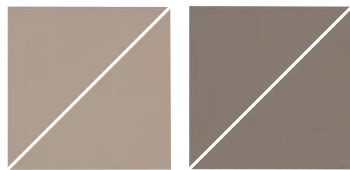
**A215** ▶ Empress White  
UPS/PO

**C370** ▶ Featherstone  
UPS/PO



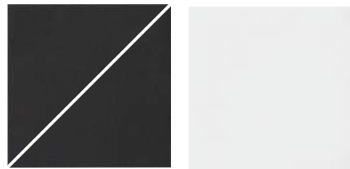
**C360** ▶ Maple Sugar  
UPS/PO

**B210** ▶ Seabeeze  
UPS/PO



**A870** ▶ Seal Taupe  
UPS/PO

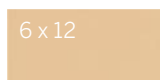
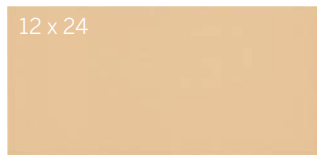
**B110** ▶ Antico Taupe  
UPS/PO



**A890** ▶ Ebony  
UPS/PO

**RPW1** ▶ Pure White  
UPS only

## Sizes Shown in C360 Maple Sugar UPS



## Sizes & Finishes

### Field Tile

Available in all colors

Nominal (in)	Actual (in)	Thickness (in)	Finish
3 x 12*†	2-3/4 x 11-3/4	5/16	UPS/PO
3 x 24*†	2-3/4 x 23-3/4	5/16	UPS/PO
4 x 12*†	3-3/4 x 11-3/4	5/16	UPS/PO
4 x 24*†	3-3/4 x 23-3/4	5/16	UPS/PO
6 x 6*†	5-3/4 x 5-3/4	5/16	UPS/PO
6 x 12*†	5-3/4 x 11-3/4	5/16	UPS/PO
6 x 24*†	5-3/4 x 23-3/4	5/16	UPS/PO
12 x 24	11-3/4 x 23-3/4	5/16	UPS/PO

NOTE: RPW1 Pure White is only available in unpolished.

Crossville recommends a grout joint of 3/16 to 1/4 inch.

\* Custom cut program. Allow 2-4 weeks for delivery depending on Crossville's production schedule.

† The cut/bevel tile is cut from larger format tile and the edges are beveled to provide a factory appearance.

### Coordinating Trim

Nominal (in)	Actual (in)	Thickness (in)	Finish
4 x 12 Single Bullnose	3-3/4 x 11-3/4	5/16	UPS/PO
2 x 12 Cove Base	1-3/4 x 11-3/4	3/8	UPS
2 x 2 Cove Base Inside Corner	1-3/4 x 1-3/4	3/8	UPS
2 x 4 Cove Base Outside Corner	1-3/4 x 3-1/2	3/8	UPS



4 x 12 Single Bullnose



2 x 12  
Cove Base



2 x 2 Inside  
Cove Base  
Corner



2 x 4 Outside  
Cove Base  
Corner

## Product Performance

Breaking Strength	350-420 lbf	ASTM C648
Bond Strength	>200 psi	ASTM C482
Chemical Resistance	Unaffected	ASTM C650
Frost Resistance	Resistant	ASTM C1026
Water Absorption	<0.10%	ASTM C373
Scratch Hardness	6	Mohs Scale

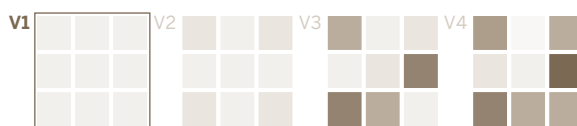
### Wet Dynamic Coefficient of Friction Range

(wet slip potential)

UPS	0.58 - 0.68	AcuTest <sup>sm</sup>
PO	0.31 - 0.41	AcuTest <sup>sm</sup>

### Shade & Texture Index

Retro Active has a shade variation of V1.



**V1 Uniform appearance**

V2 Slight Variation

V3 Moderate Variation

V4 Substantial Variation

This porcelain tile product is produced with a V1 variation. Differences among pieces from the same production run are minimal. Inspect the product upon delivery and for best results, blend tile from several cartons during installation.

### Environmentally Conscious

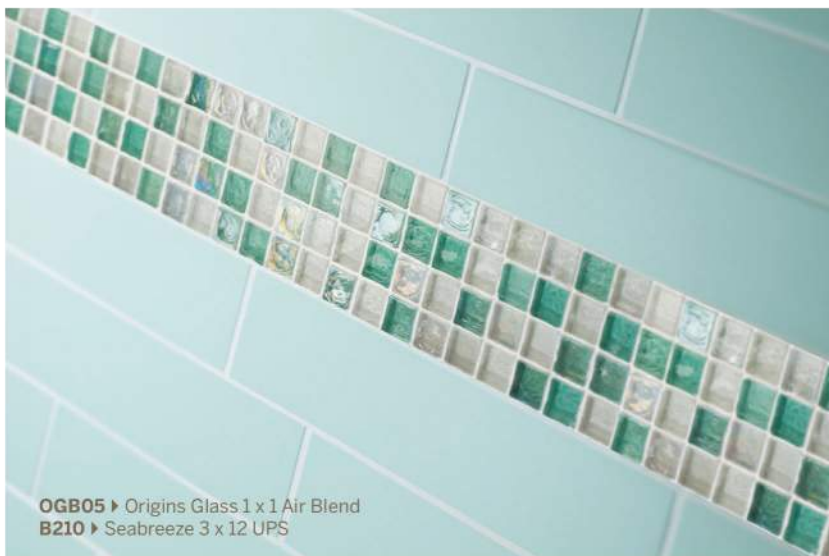
Retro Active contains a minimum of 4% pre-consumer recycled content and is manufactured by Crossville® using processes that have been certified by Scientific Certification Systems. SCS has verified that through these recycling processes Crossville recycles nearly 12 million pounds of previously discarded filtrate and fired tile waste. In addition to its own fired waste recycling, Crossville also accepts and recycles reclaimed, previously installed tile through its Tile Take-Back™ program. For more information, visit [CrossvilleInc.com/green](http://CrossvilleInc.com/green).

### Recommended Use

Retro Active is recommended for interior floors, walls, countertops, and exterior walls in both residential and commercial applications. Retro Active is not recommended for exterior horizontal surfaces or exterior paving. **The polished finish is not recommended for wet areas where standing water may occur.** If offset pattern is required for tiles 18 inches or longer, Crossville® recommends an offset of not greater than 33%.

### Care and Maintenance

Regular cleaning is the best way to keep Retro Active tile looking good for years to come. Use clean, hot water (combined with a household cleaner for more aggressive cleaning). Rinse thoroughly and dry with a soft cloth. No waxes are needed.



OGB05 ▶ Origins Glass 1 x 1 Air Blend  
B210 ▶ Seabreeze 3 x 12 UPS



RetroActive ▶ RPW1 Pure White 3 x 12 UPS  
A870 Seal Taupe 4 x 12 UPS  
A890 Ebony 12 x 12 UPS  
B110 Antico Taupe 12 x 12 UPS  
B210 Seabreeze 12 x 12 UPS

### Trade Organizations



### Environmentally Aware



---

# Retro Active

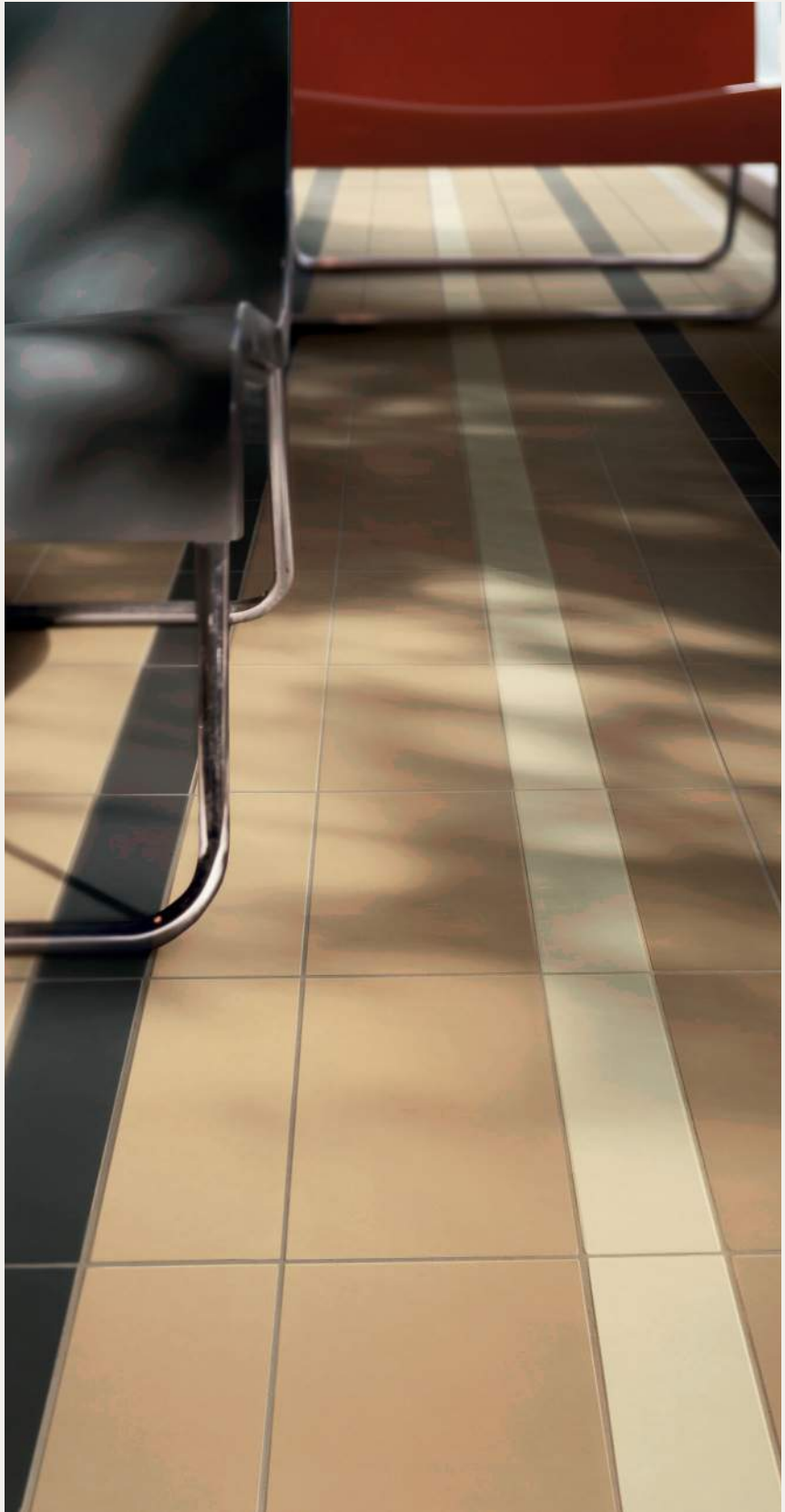
---

## Porcelain Stone®

Selected and grouped to make creating that perfect retro look a little easier.

- Available in eight classic colors
- Available in two finishes, unpolished and polished
- Tile sizes of 3 x 12, 3 x 24, 4 x 12, 4 x 24, 6 x 6, 6 x 12, 6 x 24 and 12 x 24
- Coordinating bullnose available in both finishes with cove base and cove base corners available in unpolished only.
- Ideal for minimalist design schemes in commercial and upscale residential spaces
- All the performance attributes of Porcelain Stone® with the aesthetics and the versatility to make it a design favorite.
- Made in the U.S.A.
- 4% recycled content (minimum)\*

Retro Active is made in the U.S.A. through Crossville's EcoCycle Tile Process™, it contains a minimum 4% recycled content and is **Green Squared Certified**—a beautifully responsible selection for your next design project.



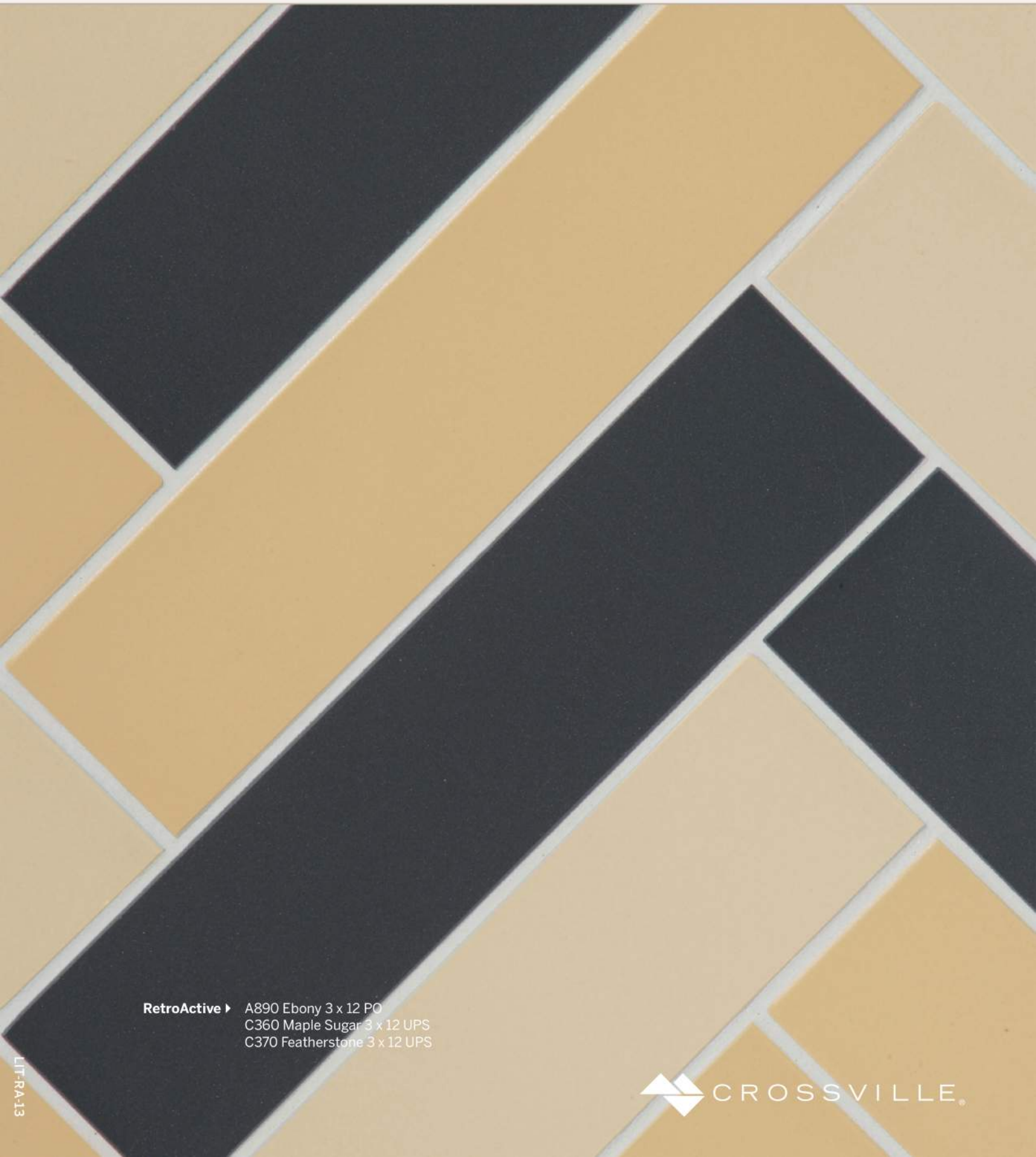
**RetroActive** ▶ A215 Empress White 3 x 12 UPS, A890 Ebony 3 x 12 UPS, C360 Maple Sugar 4 x 12 UPS, 6 x 12 UPS

---

# Retro Active

---

Porcelain Stone®



**RetroActive ▶** A890 Ebony 3 x 12 PO  
C360 Maple Sugar 3 x 12 UPS  
C370 Featherstone 3 x 12 UPS

 **CROSSVILLE.**

LIT-RA-13

# LOCATIONS

## MANHATTAN SHOWROOM

48 East 21st Street  
New York, NY 10010  
p. 212.505.0009  
f. 212.777.9053

## MANHATTAN CONTRACTOR SHOWROOM

49 East 20th Street  
New York, NY 10003  
p. 212.505.0009  
f. 212.477.1455

## QUEENS SHOWROOM

177-02 Jamaica Avenue  
Jamaica, NY 11432  
p. 718.291.5969  
f. 718.291.5992

## LONG ISLAND SHOWROOM

277 Old Country Rd.  
Hicksville, NY 11802  
p. 516.935.5300  
f. 516.935.5322

## PHILADELPHIA SHOWROOM

1520 Locust Street  
Philadelphia, PA 19102  
p. 215.558.3698  
f. 215.545.2796

## NEW JERSEY SHOWROOM

21 White Street  
Red Bank, NJ 07701  
p. 732.677.1044  
f. 732.352.6961



**NEMO**  
NEMOTILE.COM



**RETROACTIVE**